

# Operational Forum Meeting



**20<sup>th</sup> January 2016, 10:30AM**

**Radisson Grafton Hotel, 130 Tottenham Court Road, London.**

# System Management Principles Statement



- **Compliance report for December 2015**
- **Summary of balancing actions and breaches for December 2015**
- **Performance compared to last year**

# Summary Report

1<sup>st</sup> January 2015 - 31<sup>st</sup> December 2015

	<b>Dec-15</b>
Total Number of Buy Actions	3
Total Number of Sell Actions	12
<b>Total</b>	<b>15</b>

	<b>Dec-15</b>
Number of Material Breaches	0
Number of Non-Material Breaches	0

	<b>Dec-15</b>	<b>Dec-14</b>
Number of Balancing Actions (Calendar year to date)	187	290
Number of Material Breaches (Calendar year to date)	0	0
Number of Non-Material Breaches (Calendar year to date)	0	0

## Operational Overview

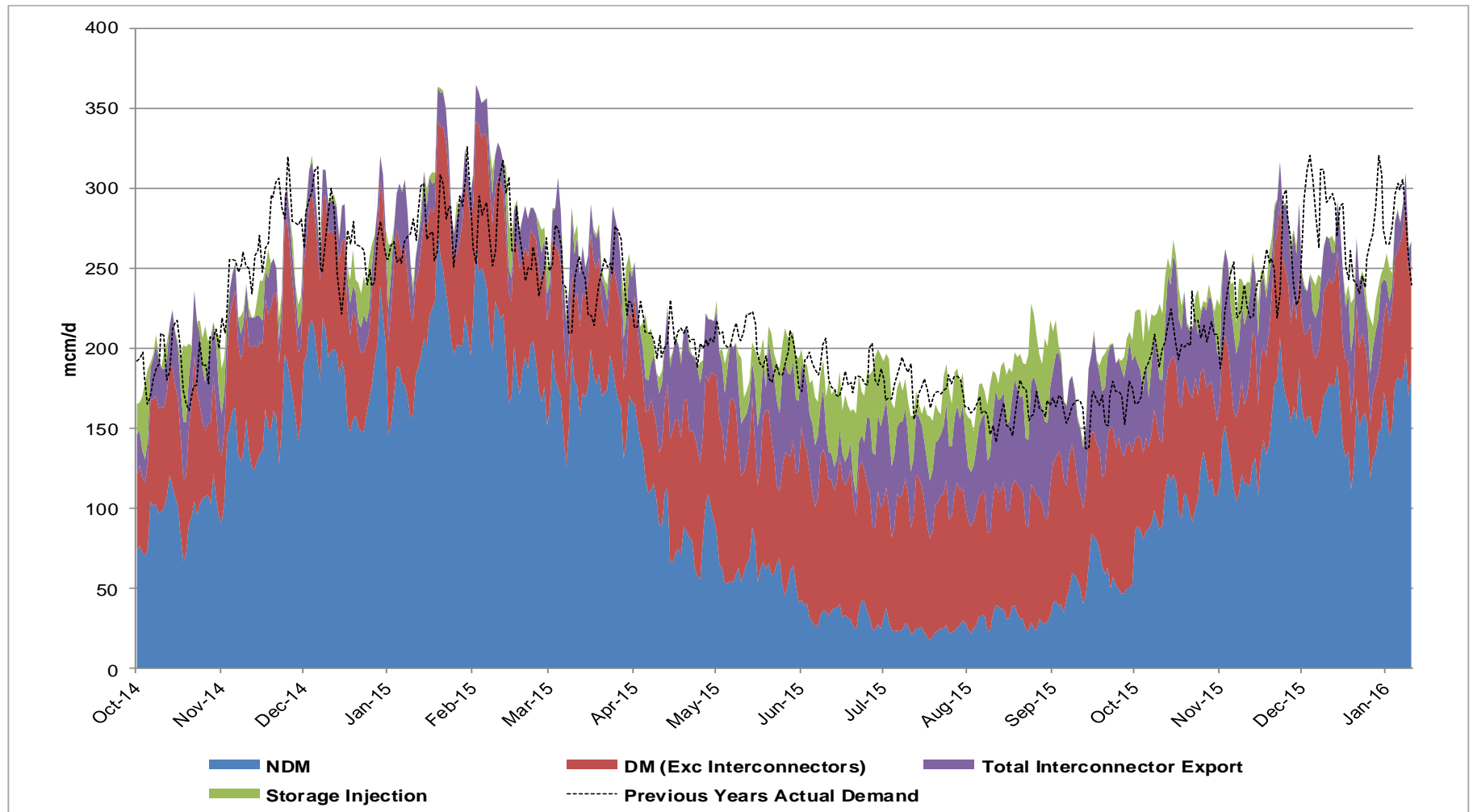


## Demands



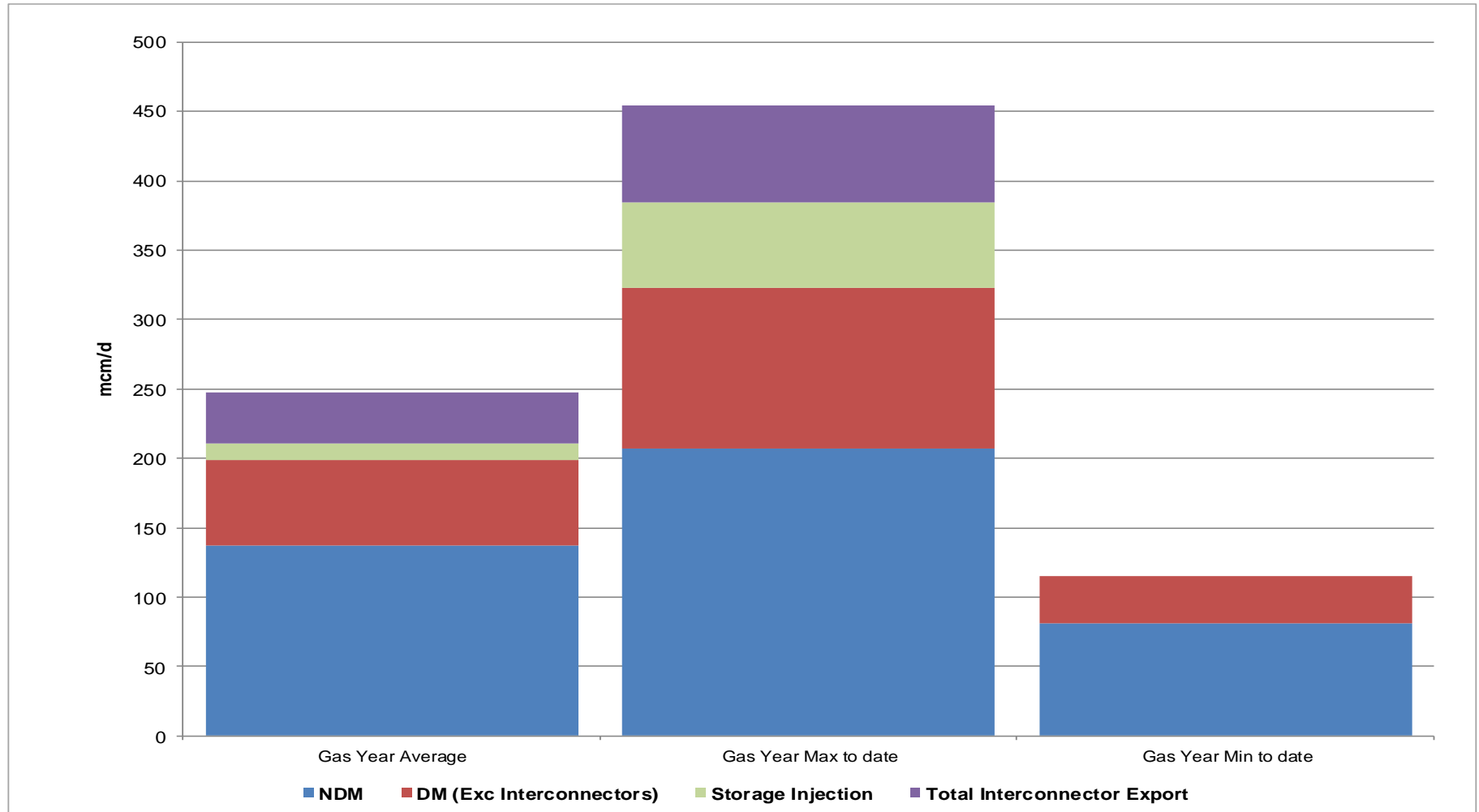
# Gas Demand Breakdown

1<sup>st</sup> October 2014 to 10<sup>th</sup> January 2016 vs Previous Year



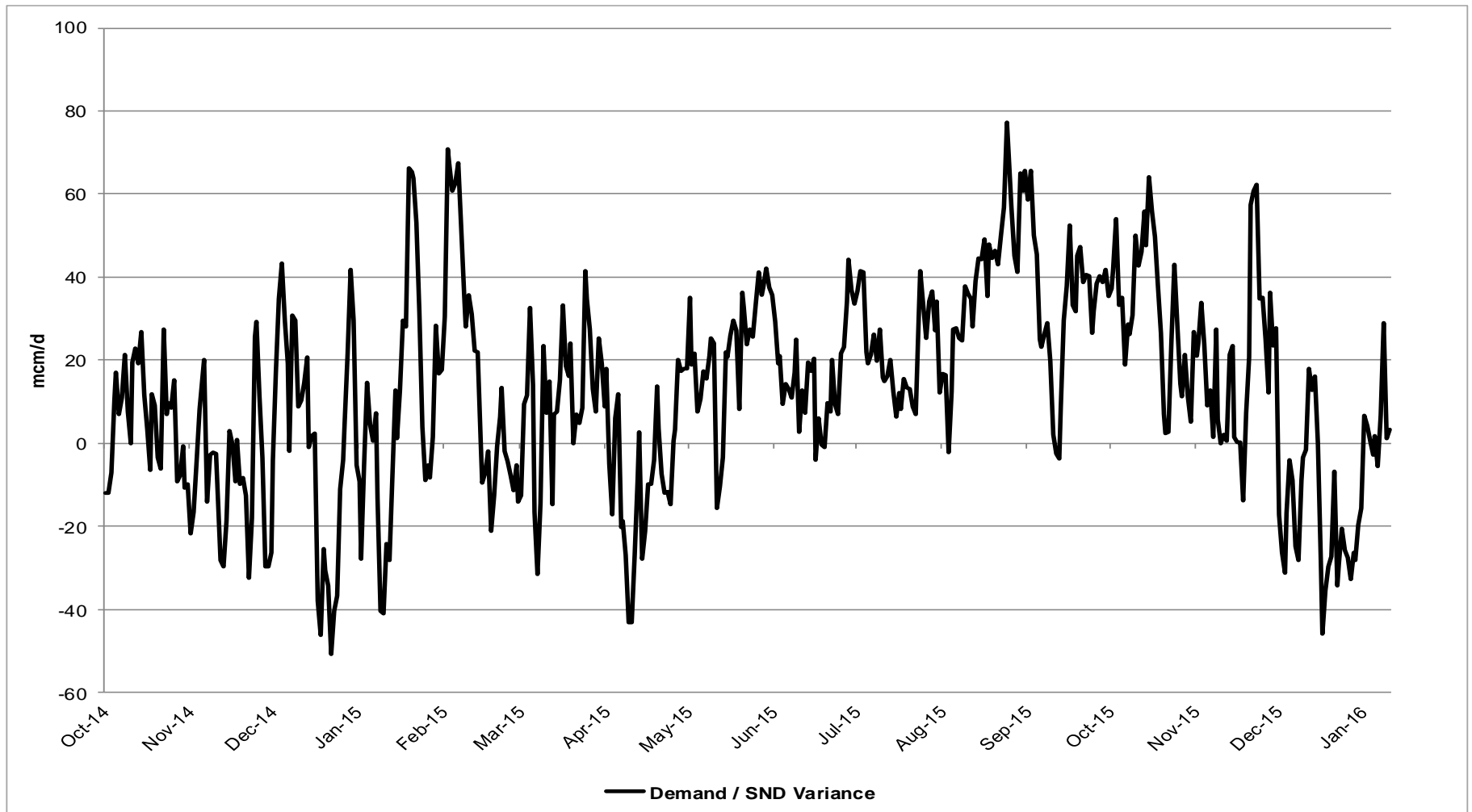
# Gas Demand Statistics

1<sup>st</sup> October 2015 to 10<sup>th</sup> January 2016



# Demand Variance from SND

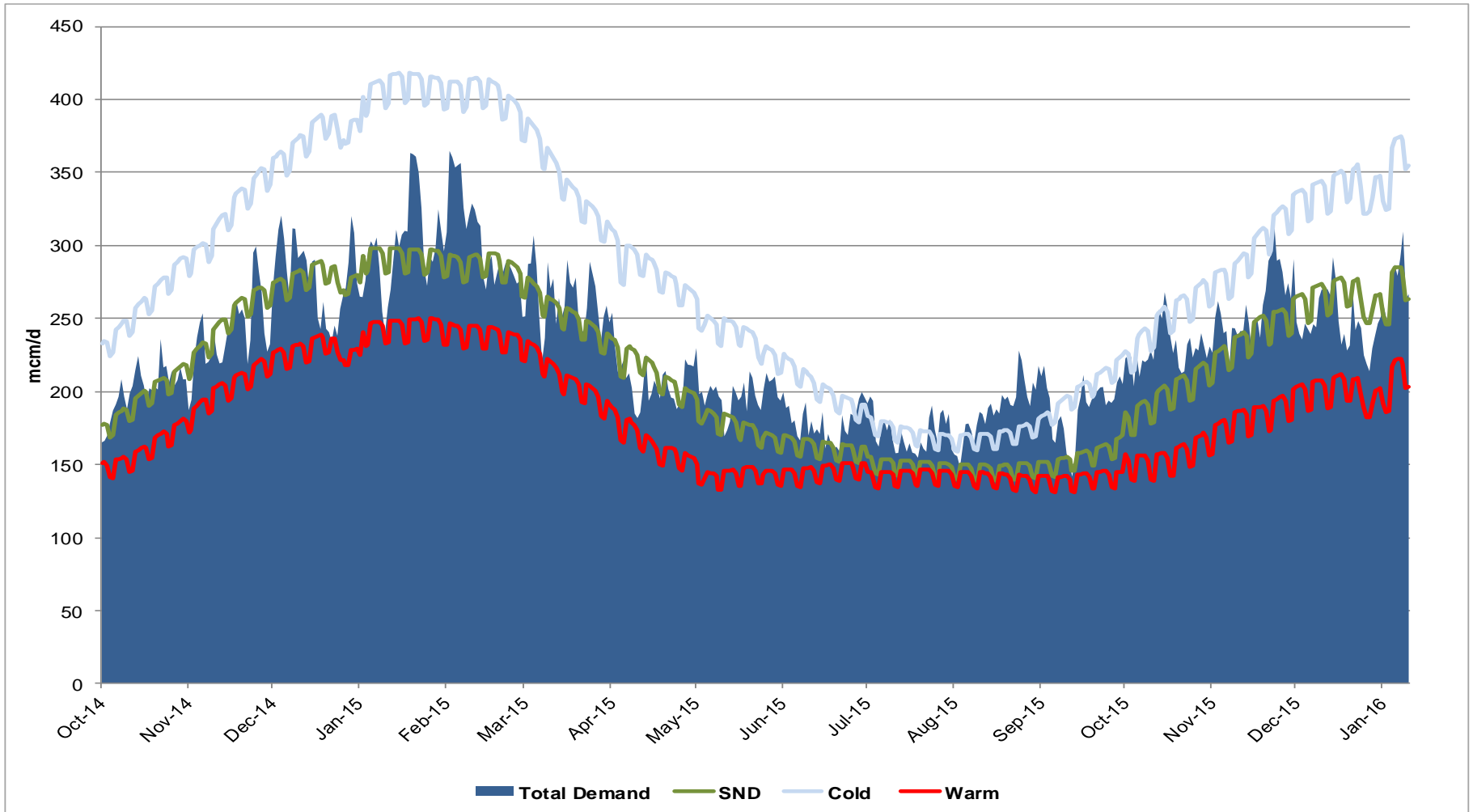
1<sup>st</sup> October 2014 to 10<sup>th</sup> January 2016





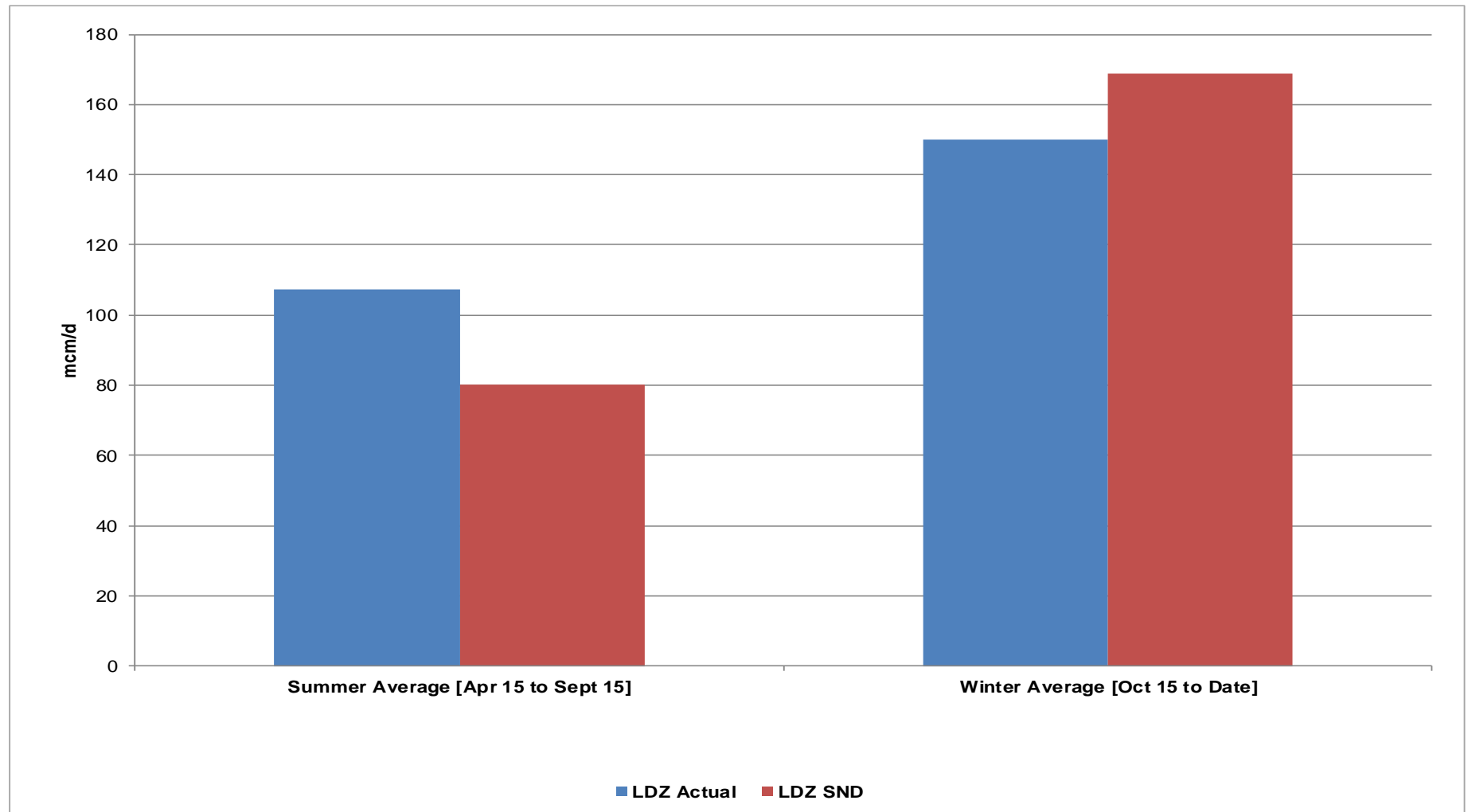
# Gas Demand Vs SND / Cold / Warm

1<sup>st</sup> October 2014 to 10<sup>th</sup> January 2016



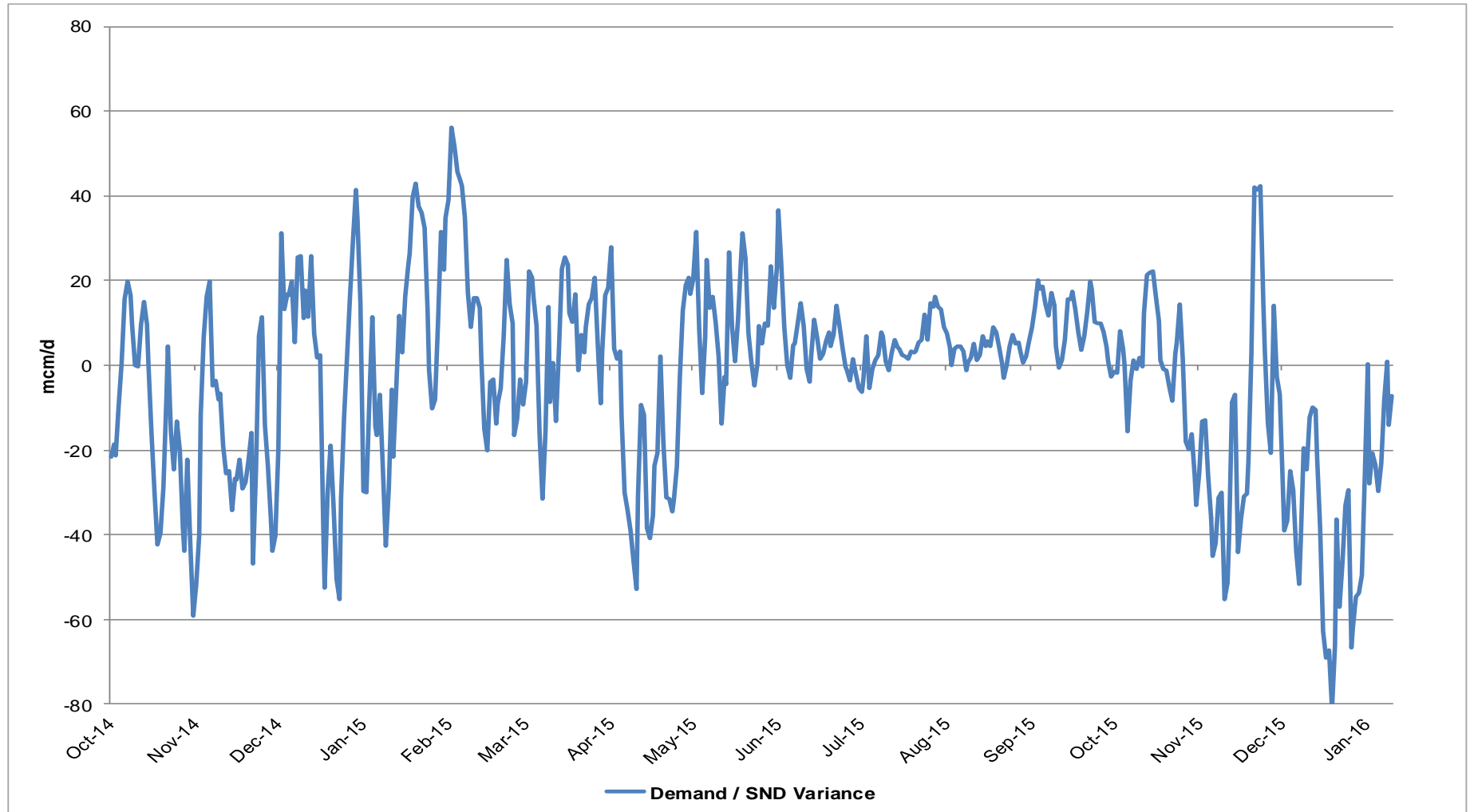
# LDZ Actual Demand Vs LDZ SND

1<sup>st</sup> April 2015 to 10<sup>th</sup> January 2016



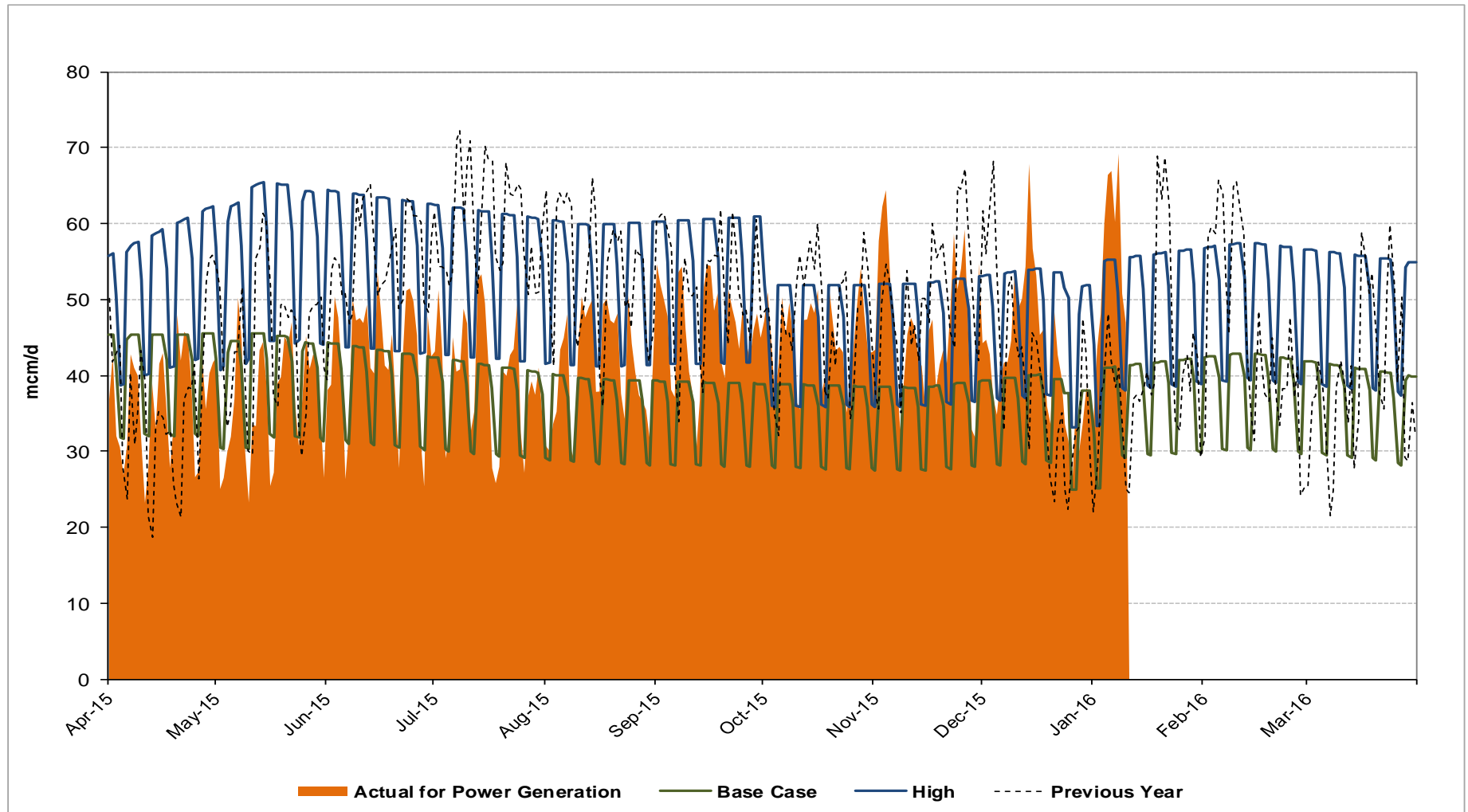
# LDZ Demand / LDZ SND Variance

1<sup>st</sup> October 2014 to 10<sup>th</sup> January 2016



# Gas Consumption for Power Generation

1<sup>st</sup> April 2015 to 10<sup>th</sup> January 2016

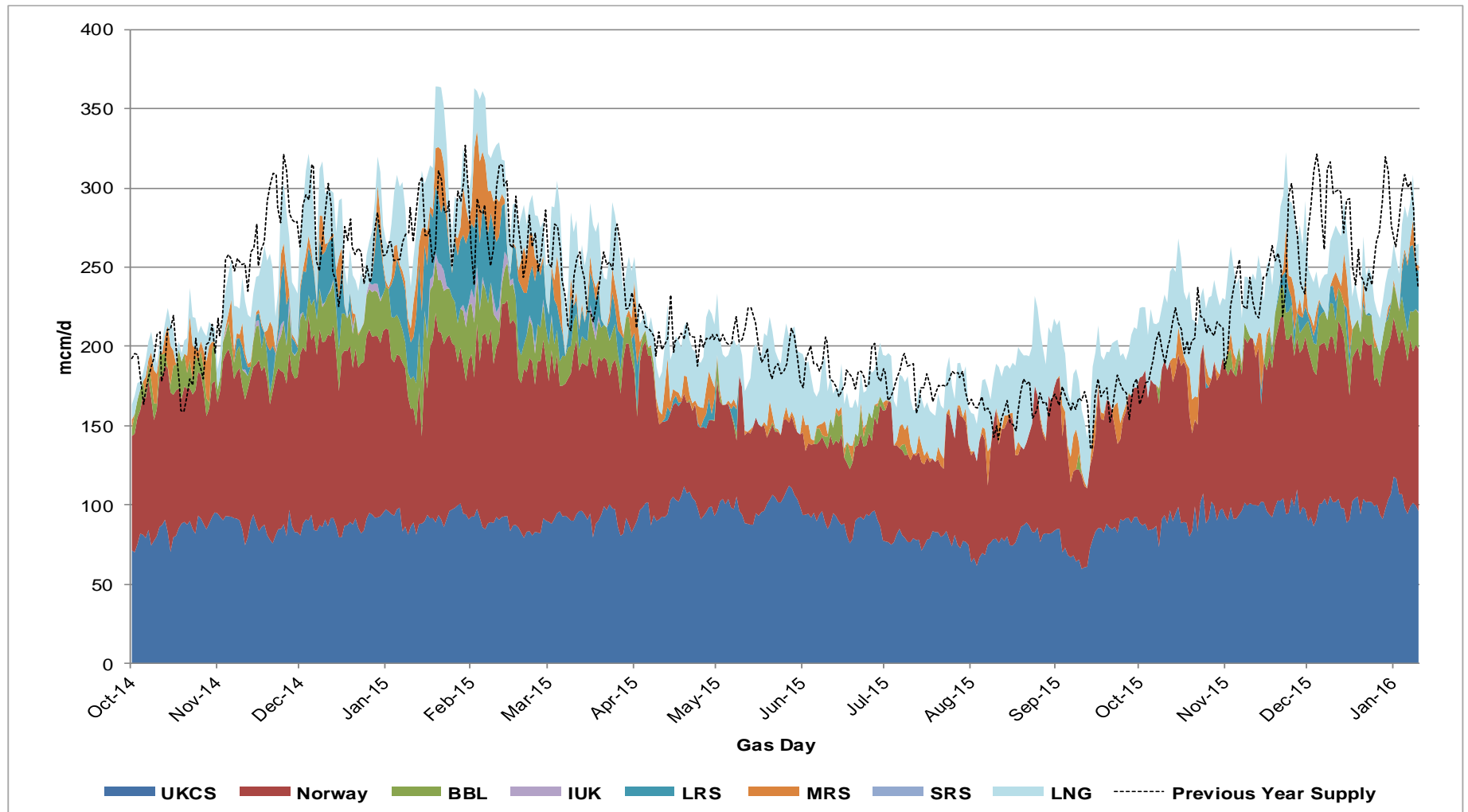


# Supplies



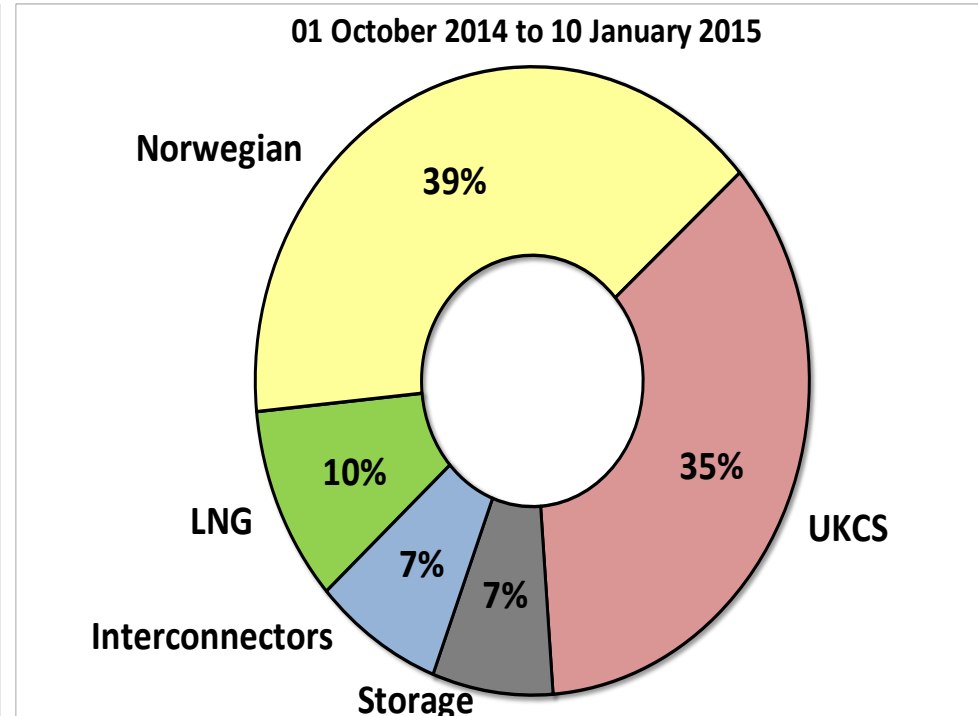
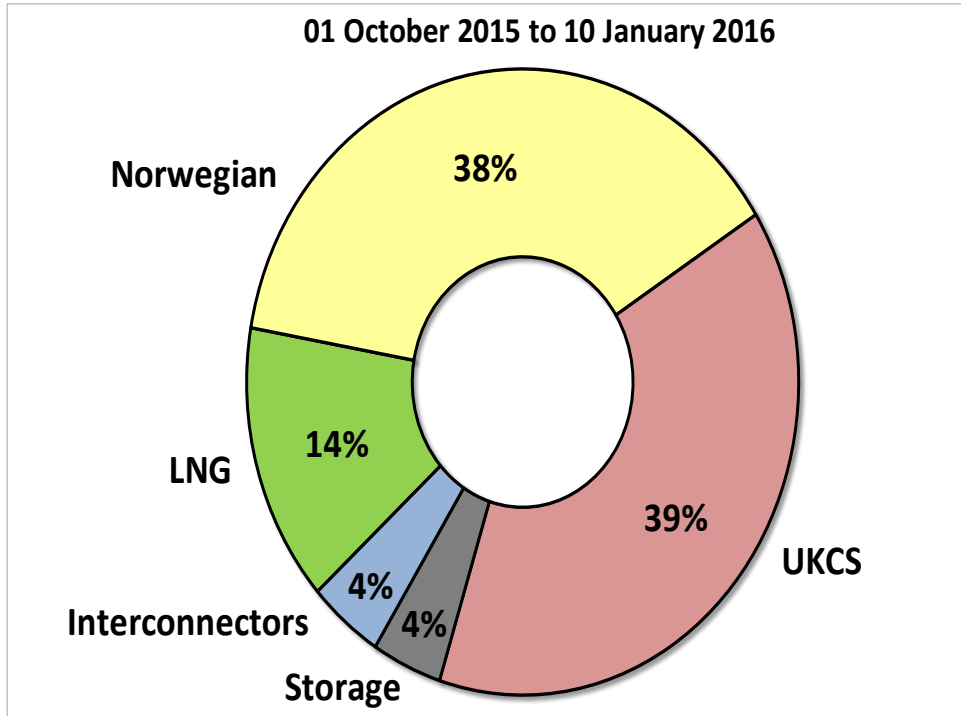
# Gas Supply Breakdown

1<sup>st</sup> October 2014 to 10<sup>th</sup> January 2016 vs Previous Year



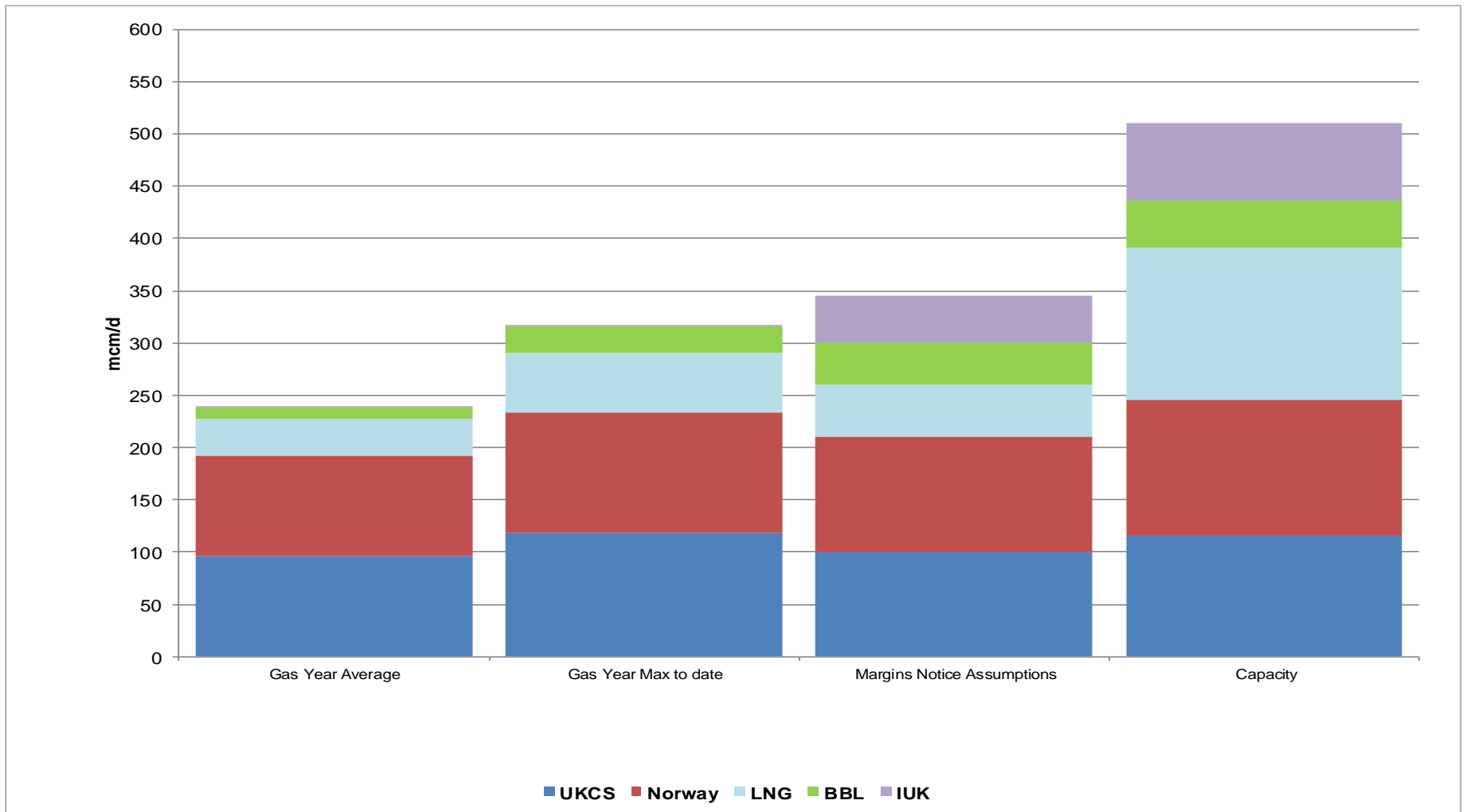
# Gas Supply Breakdown

1<sup>st</sup> October 2015 to 10<sup>th</sup> January 2016 vs Previous Year



# NSS (Non Storage Supply)

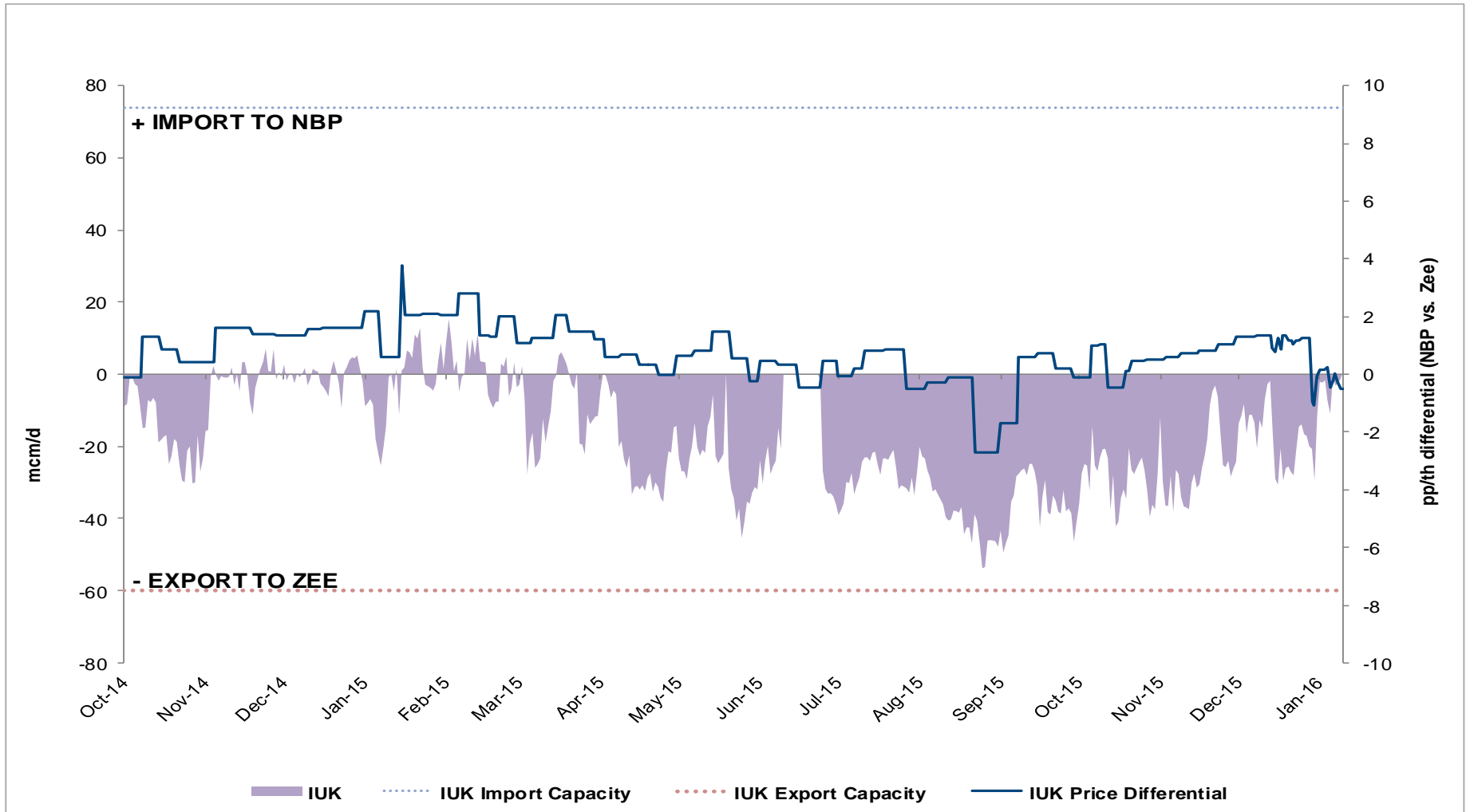
1<sup>st</sup> October 2015 to 10<sup>th</sup> January 2016





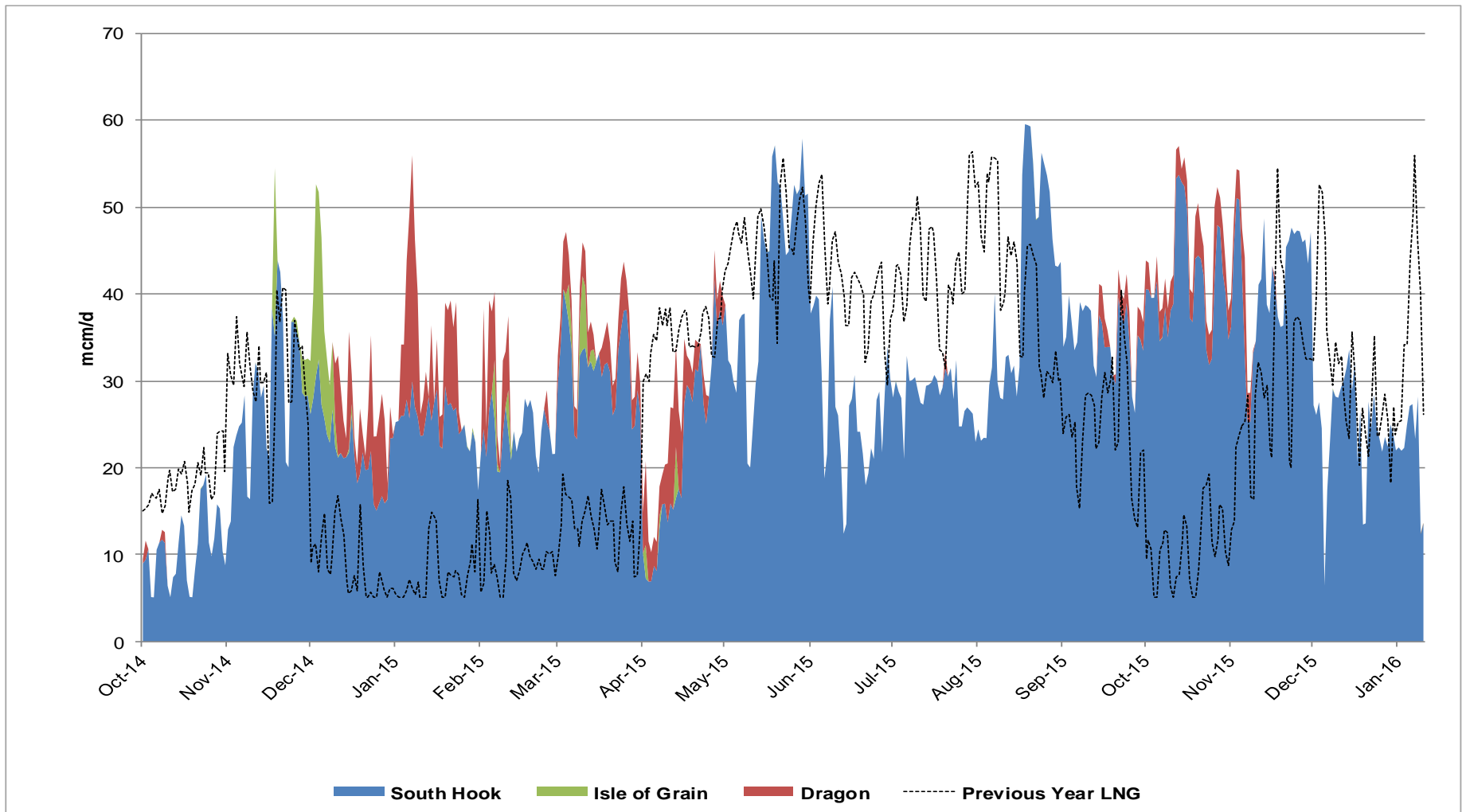
# IUK Flows vs NBP & ZEE Price Differential

1<sup>st</sup> October 2014 to 10<sup>th</sup> January 2016



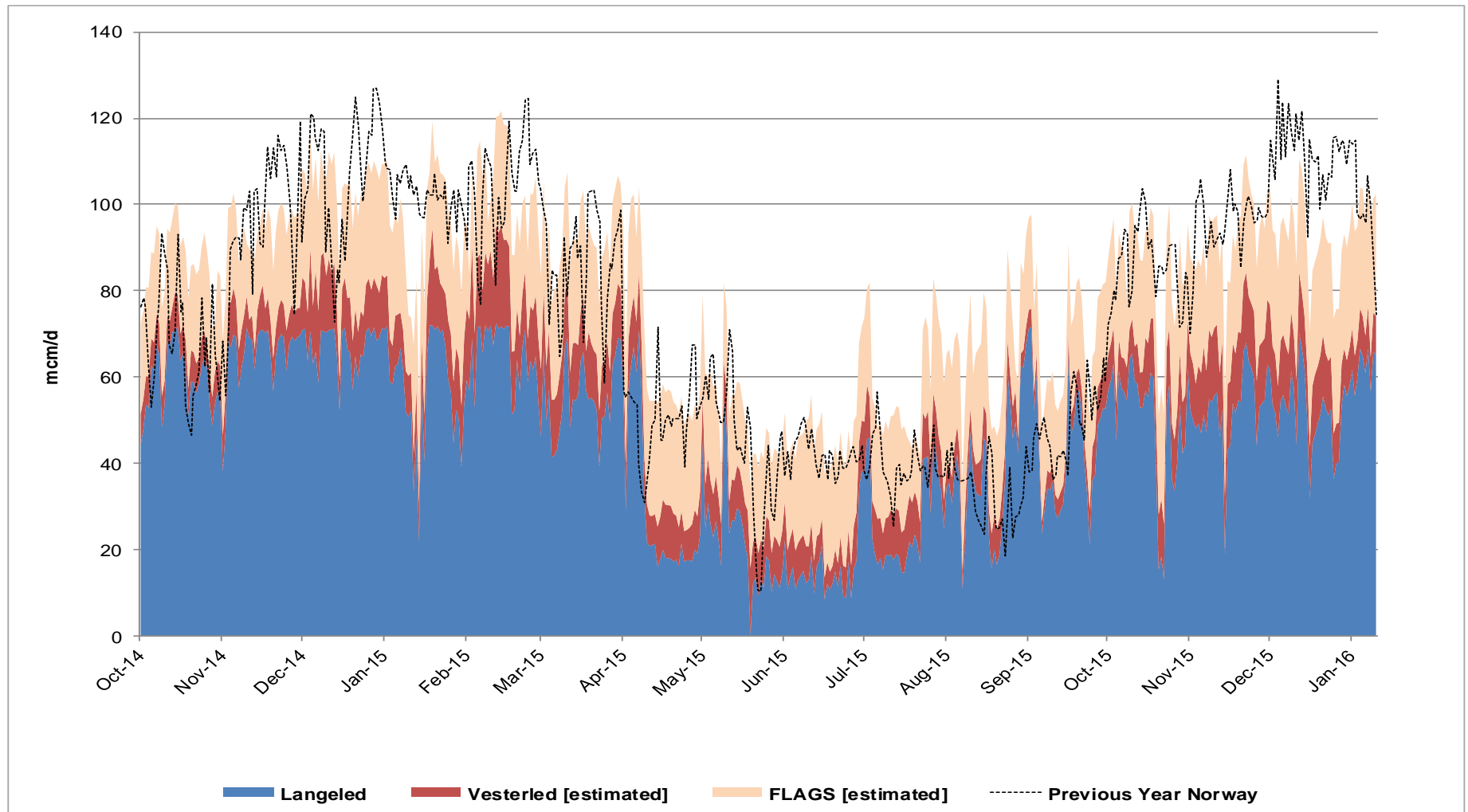
# LNG Terminal Flows

1<sup>st</sup> October 2014 to 10<sup>th</sup> January 2016



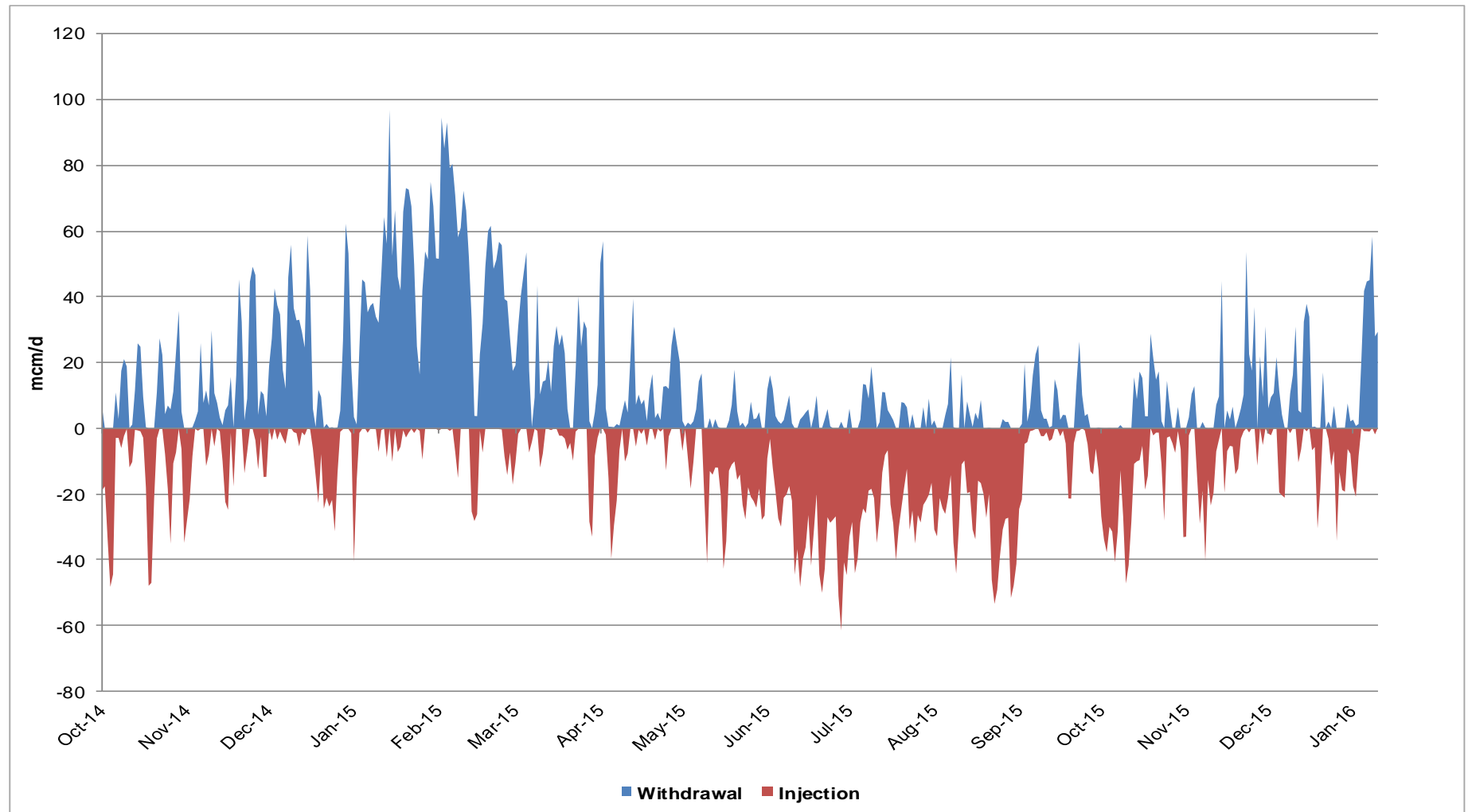
# Norwegian Flows

1<sup>st</sup> October 2014 to 10<sup>th</sup> January 2016



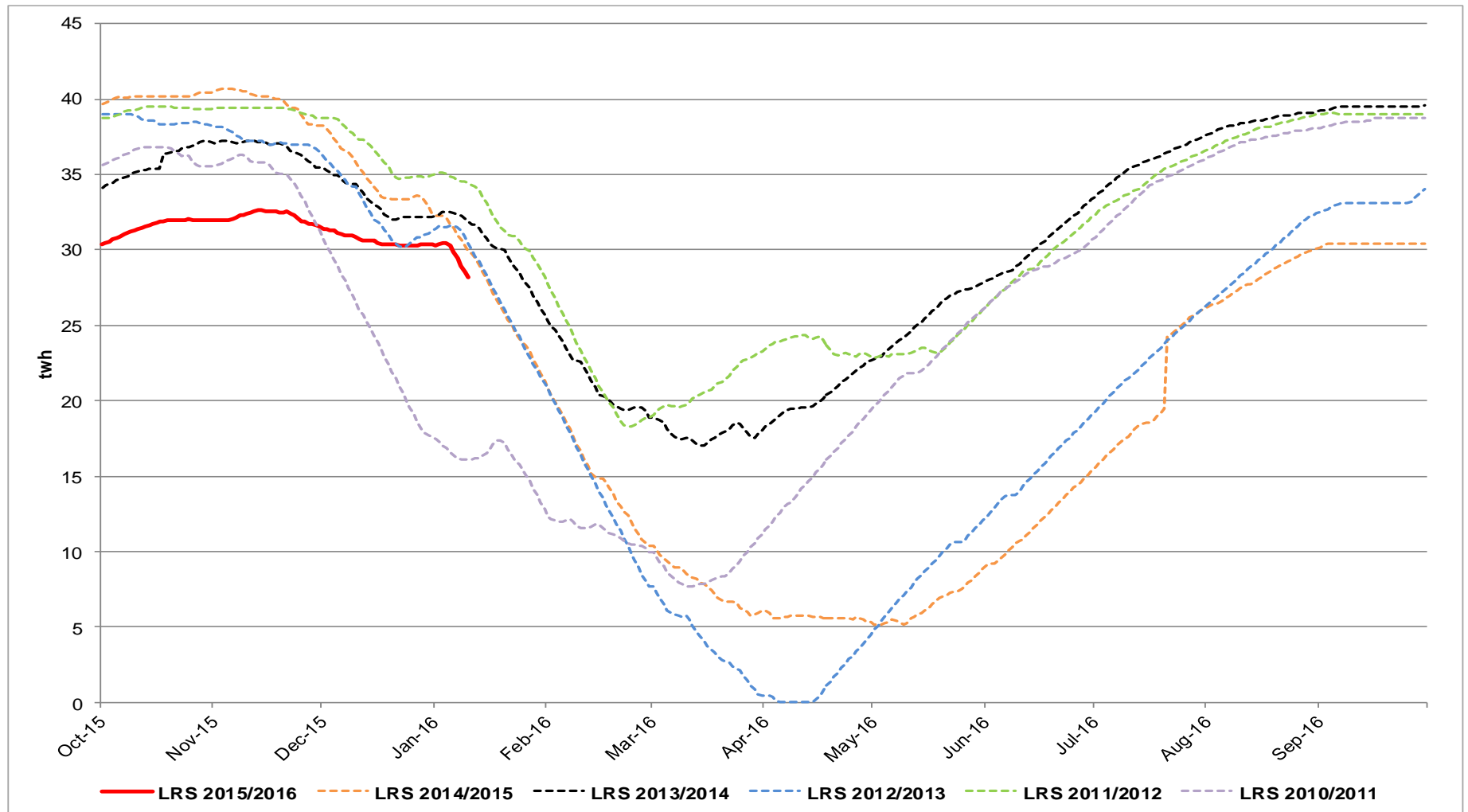
# Storage Withdrawal vs Injection

1<sup>st</sup> October 2014 to 10<sup>th</sup> January 2016



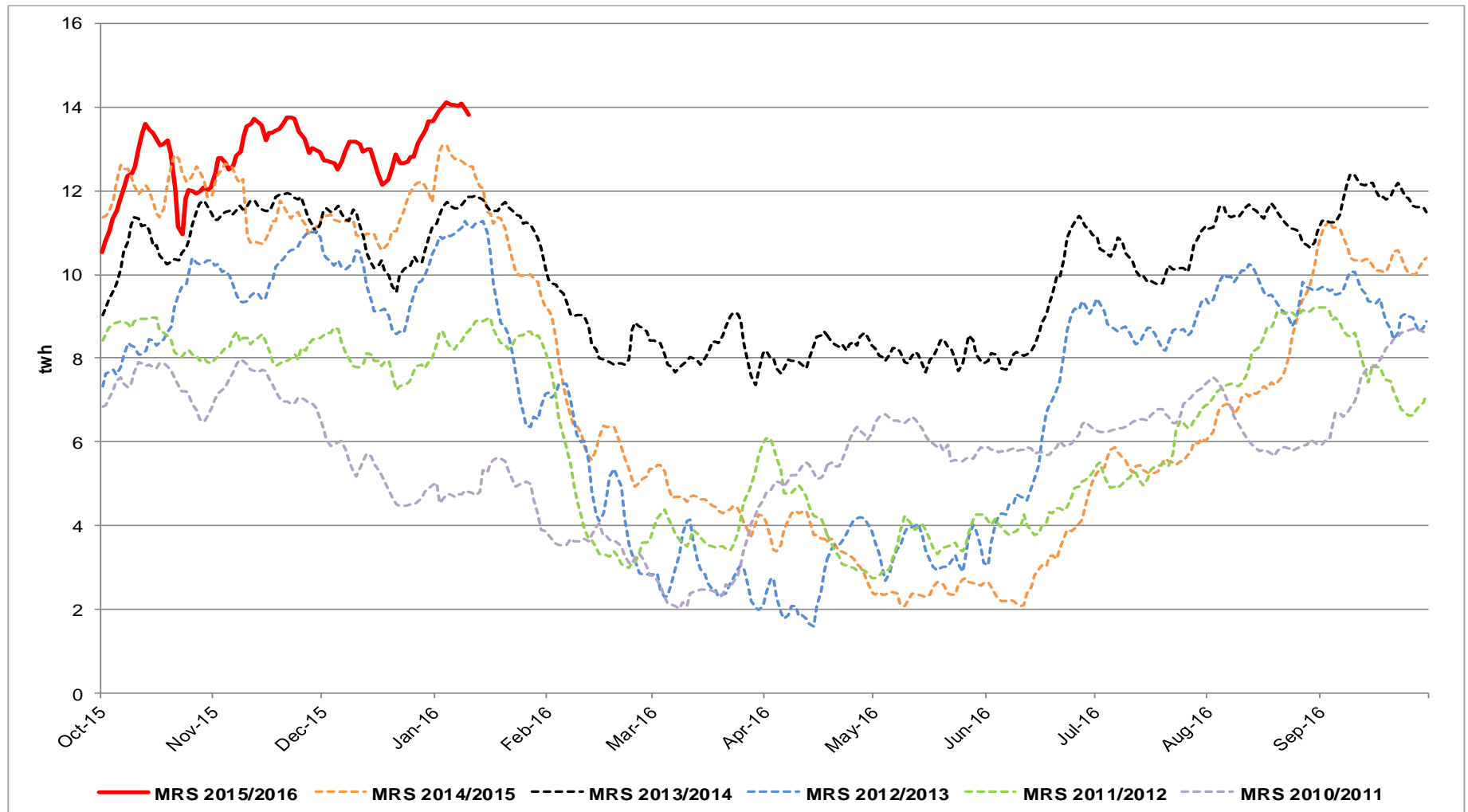
# Long Range Storage Stocks (LRS)

1<sup>st</sup> October 2015 to 10<sup>th</sup> January 2016 vs Previous Year



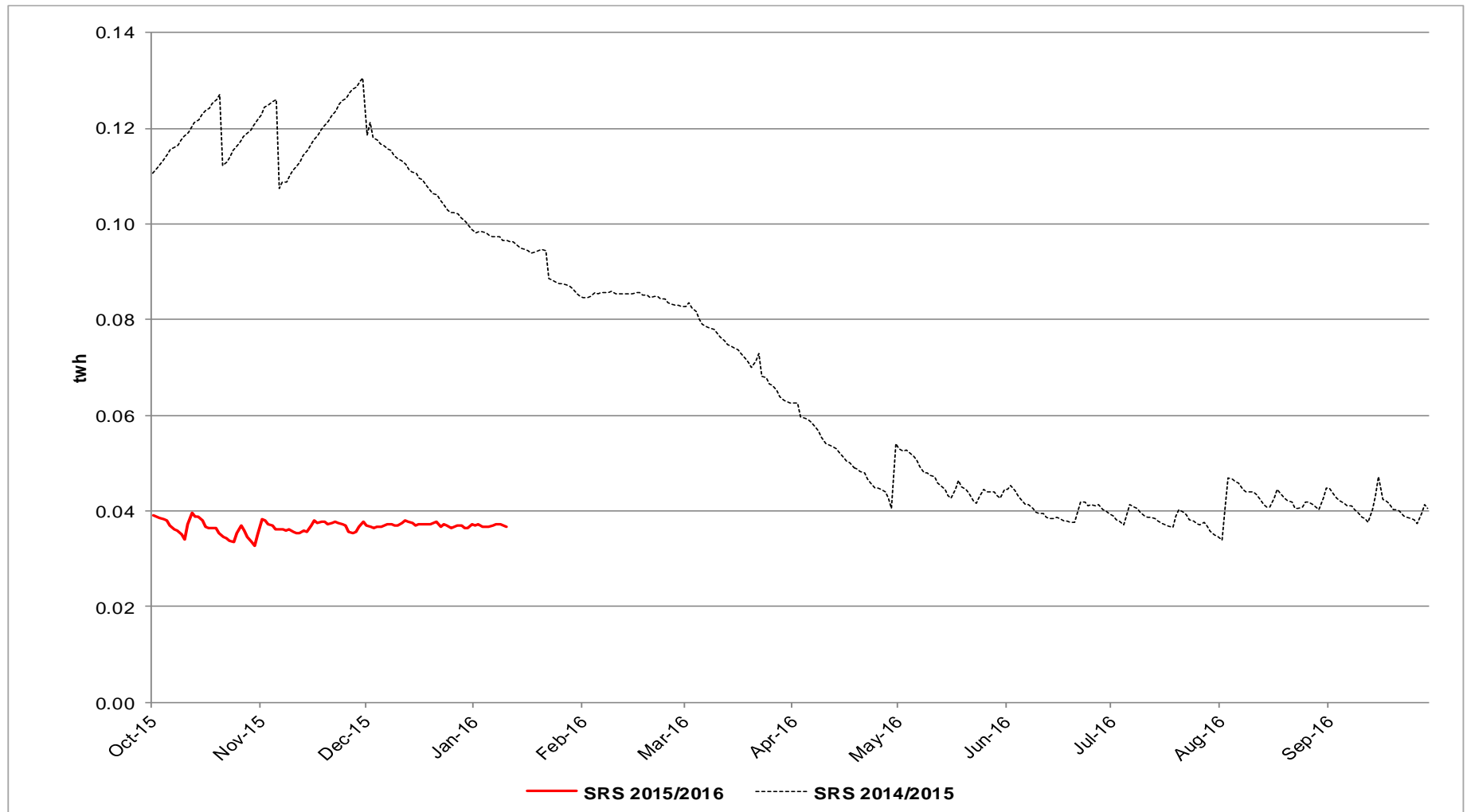
# Medium Range Storage Stocks (MRS)

1<sup>st</sup> October 2015 to 10<sup>th</sup> January 2016 vs Previous Year



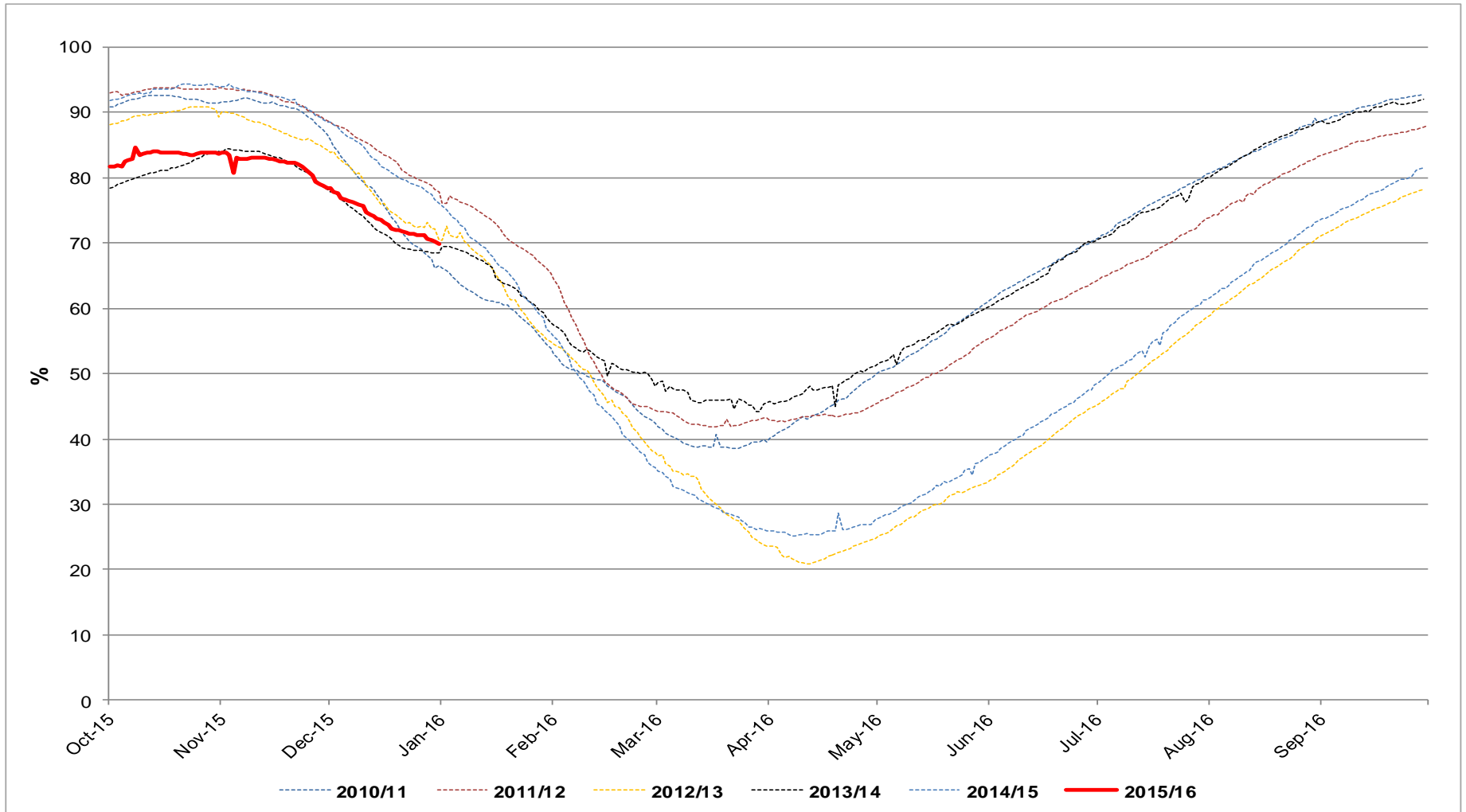
# Short Range Storage Stocks (SRS)

1<sup>st</sup> October 2015 to 10<sup>th</sup> January 2016 vs Previous Year



# Combined EU Storage Stocks (% Full)

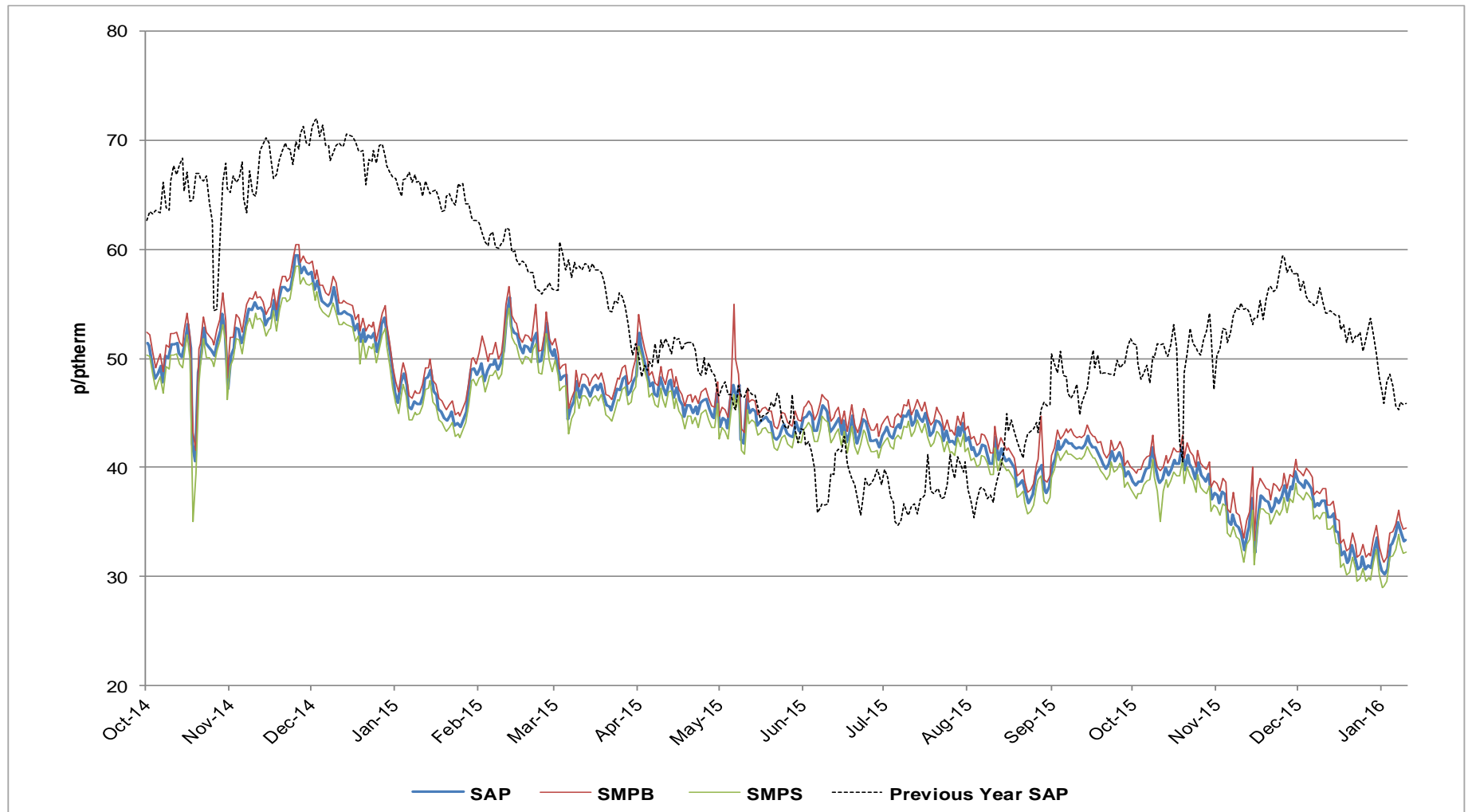
1<sup>st</sup> October 2015 to 10<sup>th</sup> January 2016 vs Previous Year





# UK Gas Prices

1<sup>st</sup> October 2014 to 10<sup>th</sup> January 2016 vs Previous Year



## What Operational Issues Affected Users?

---



## Transporter Actions and Neutrality

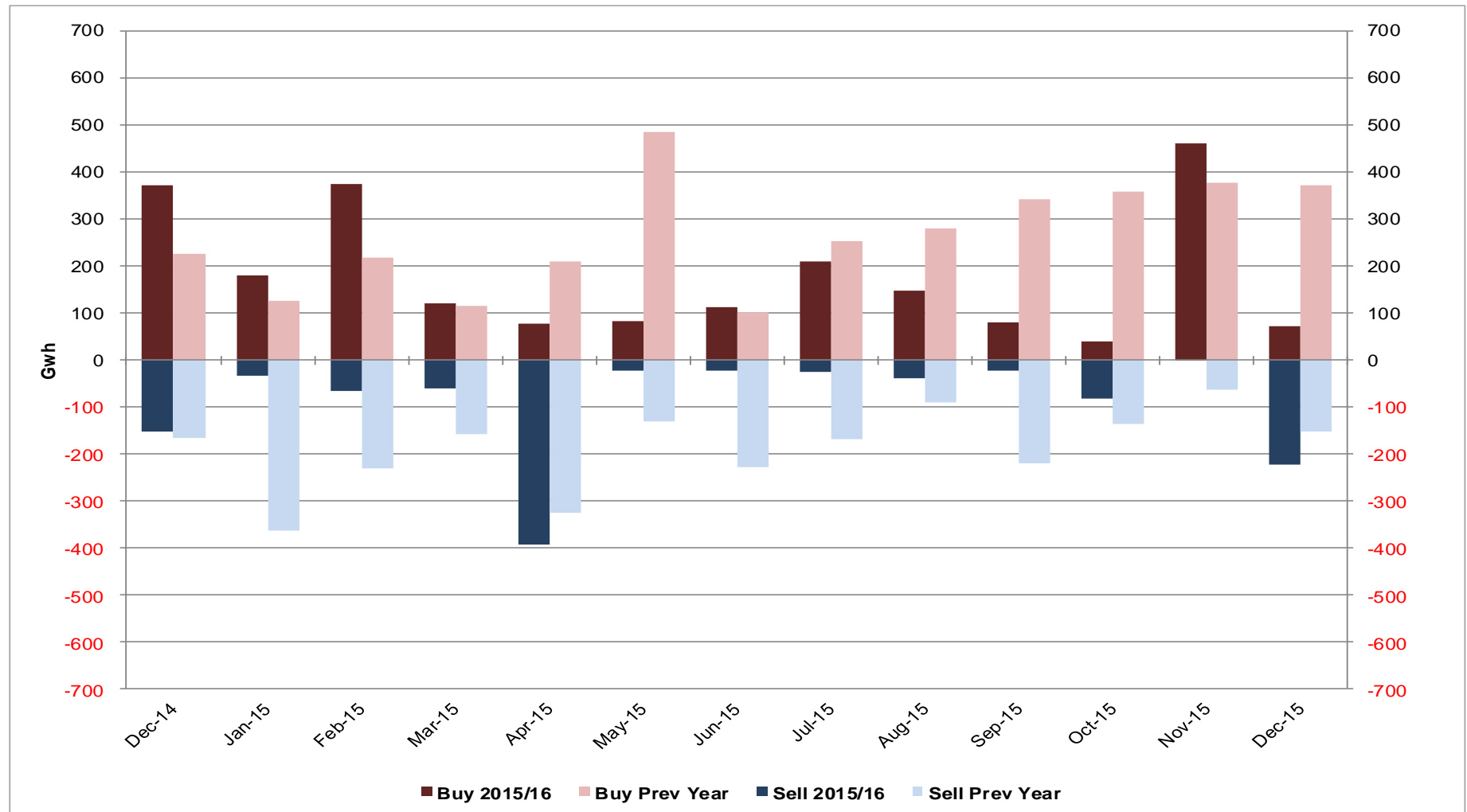


- Energy Balancing
- Capacity

# Transporter Energy Traded on the OCM

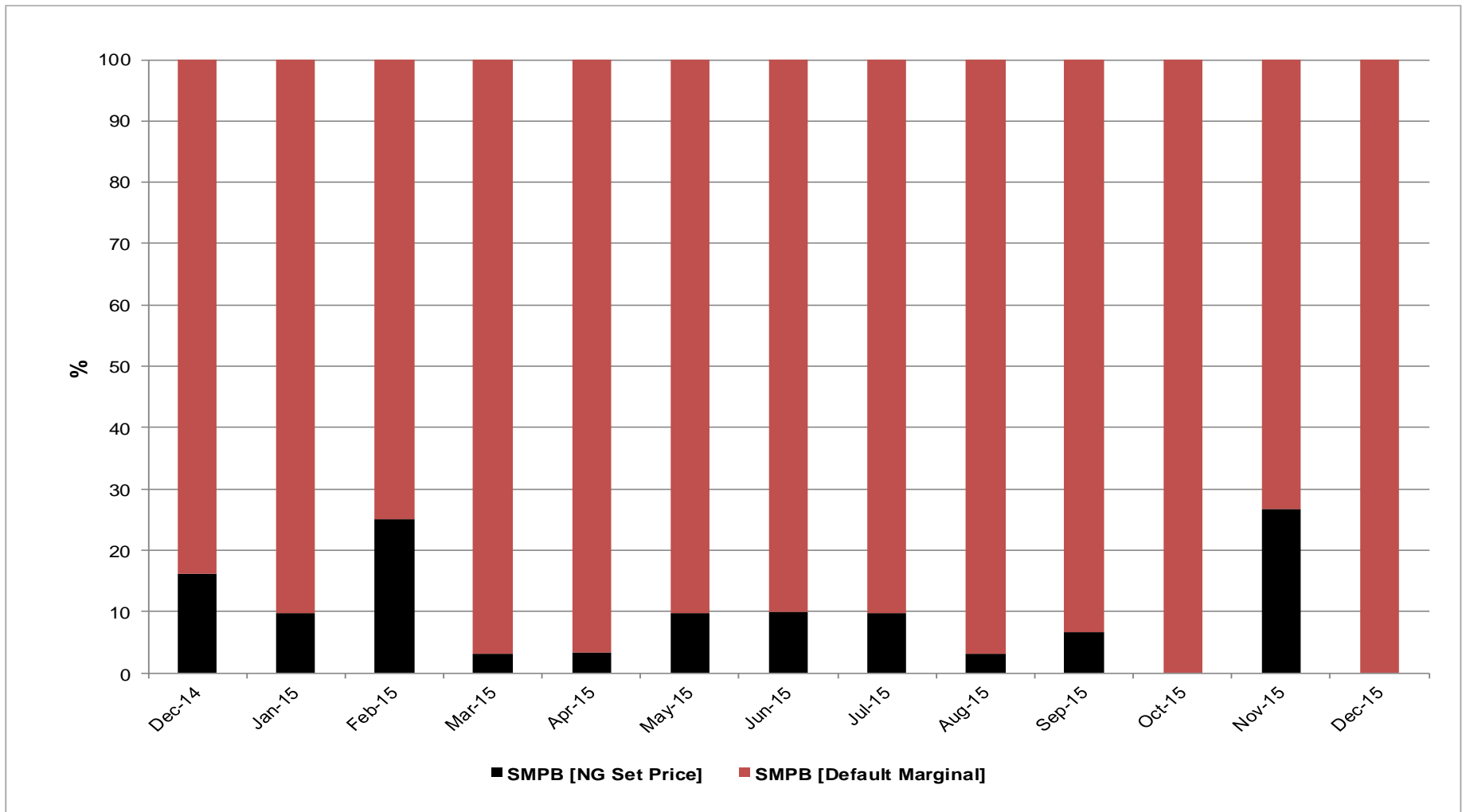
## NGG Monthly Buys and Sells

### December 2014 to December 2015 vs Previous Year



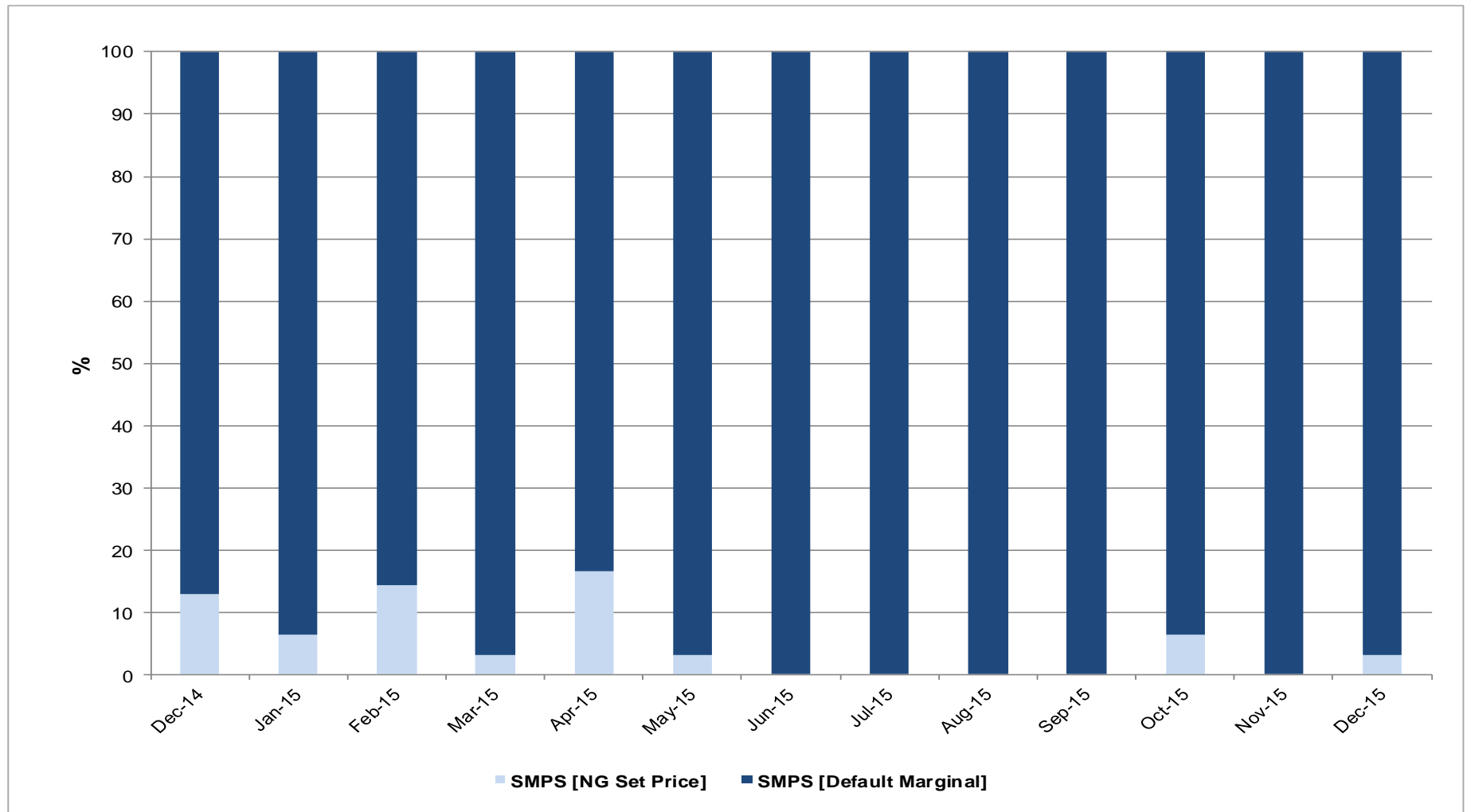
# Days of Default SMP Prices (SMPB)

December 2014 to December 2015



# Days of Default SMP Prices (SMPS)

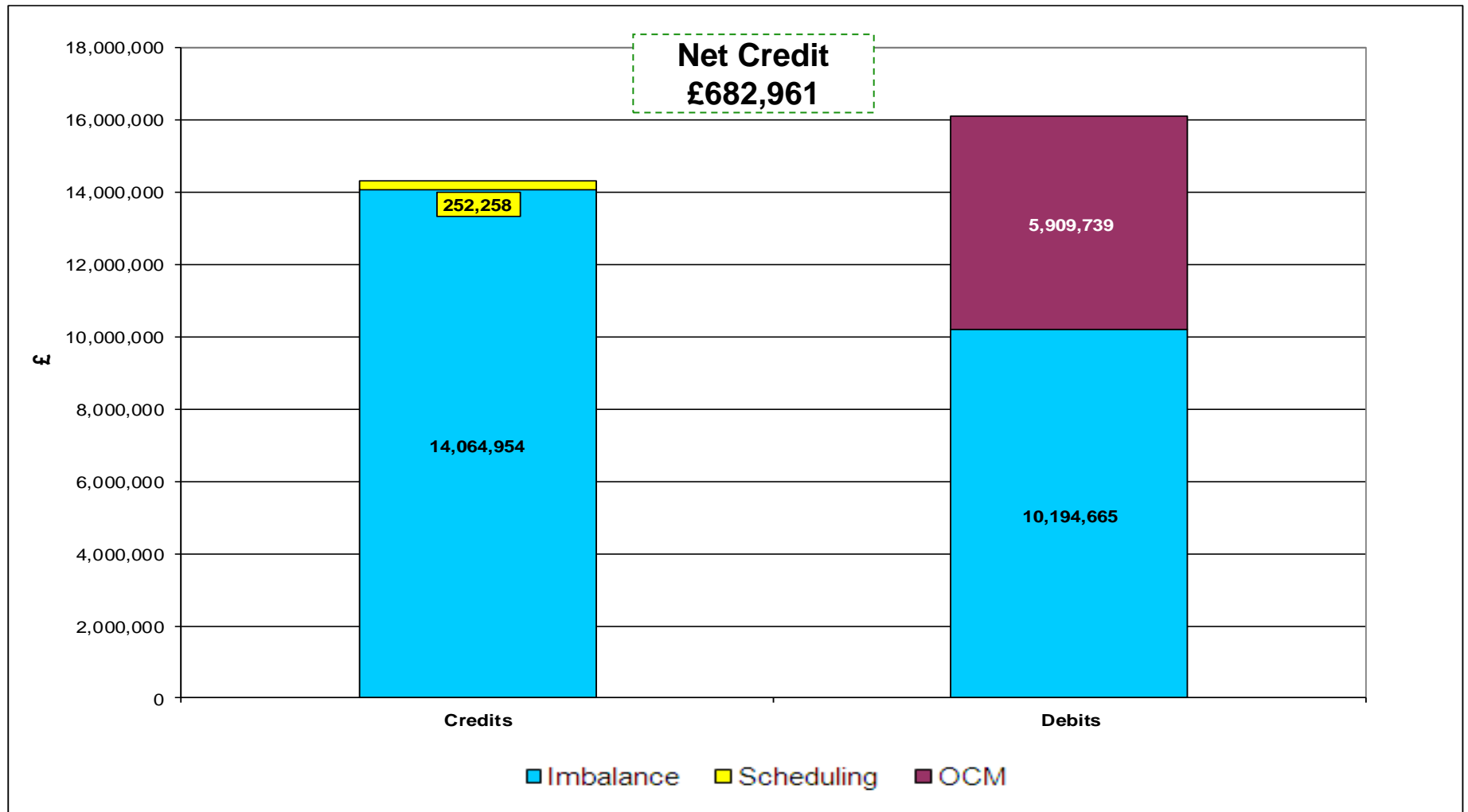
December 2014 to December 2015



# Energy Balancing - Balancing Costs

Payments / Charges / Net Credit / Debit (Imbalance / Scheduling / OCM)

November 2015



# Energy Balancing - Balancing Costs

nationalgrid

Payments / Charges / Net Credit / Debit (Imbalance / Scheduling / OCM)

November 2015

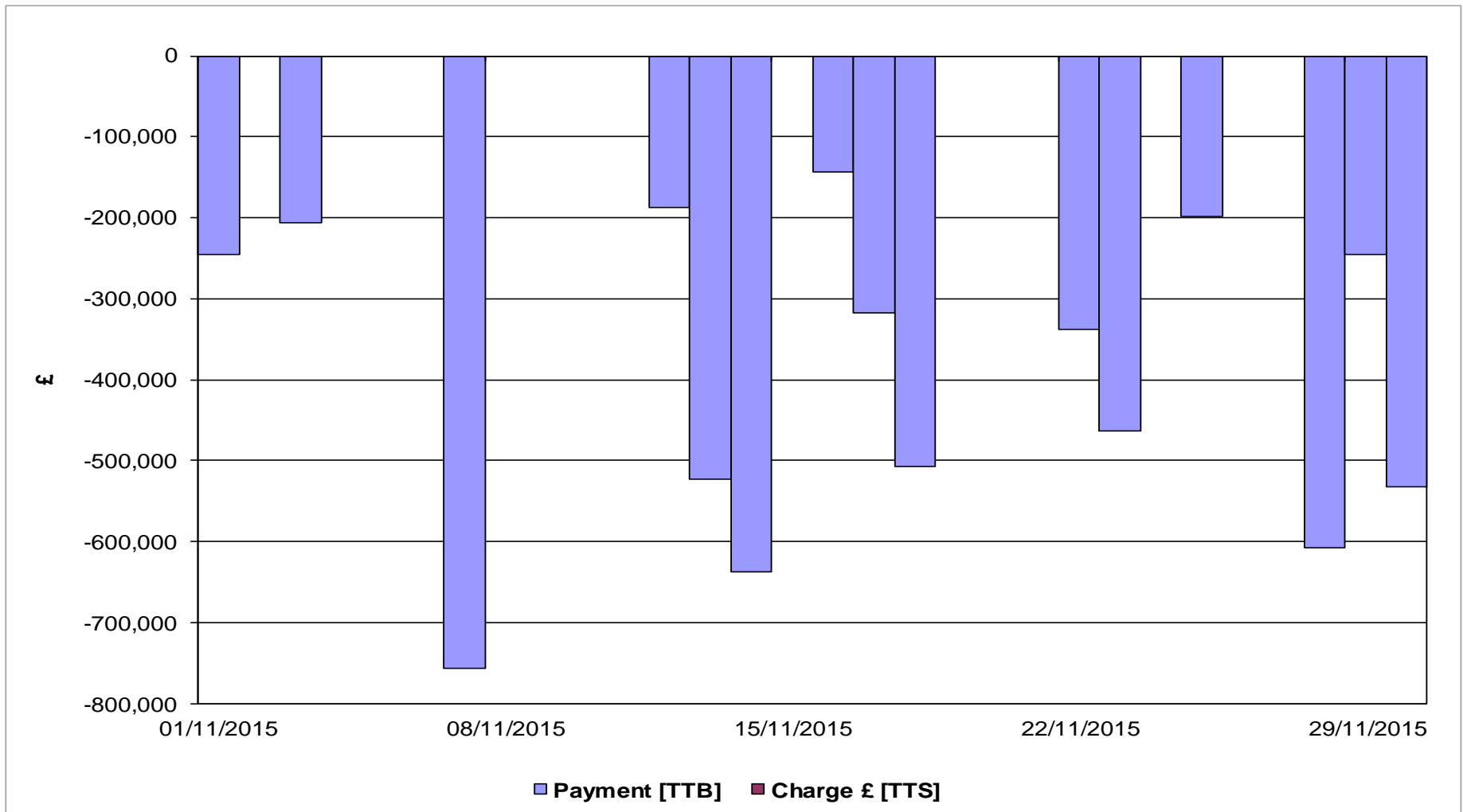
		<b>Nov-15</b>
<b>Imbalance</b>	Payment £ [DCS]	-10,194,665
	Charge £ [DCT]	14,064,954
<b>Scheduling</b>	Exit Charge £ [DXS]	6,031
	Exit Charge £ [EXS]	66,384
	Entry Charge £ [ESC]	179,844
<b>OCM</b>	Payment £ [TTB]	-5,909,739
	Charge £ [TTS]	0
<b>Balancing Costs</b>		<b>-1,787,192</b>



# Energy Balancing - Balancing Costs

OCM Payments / Charges

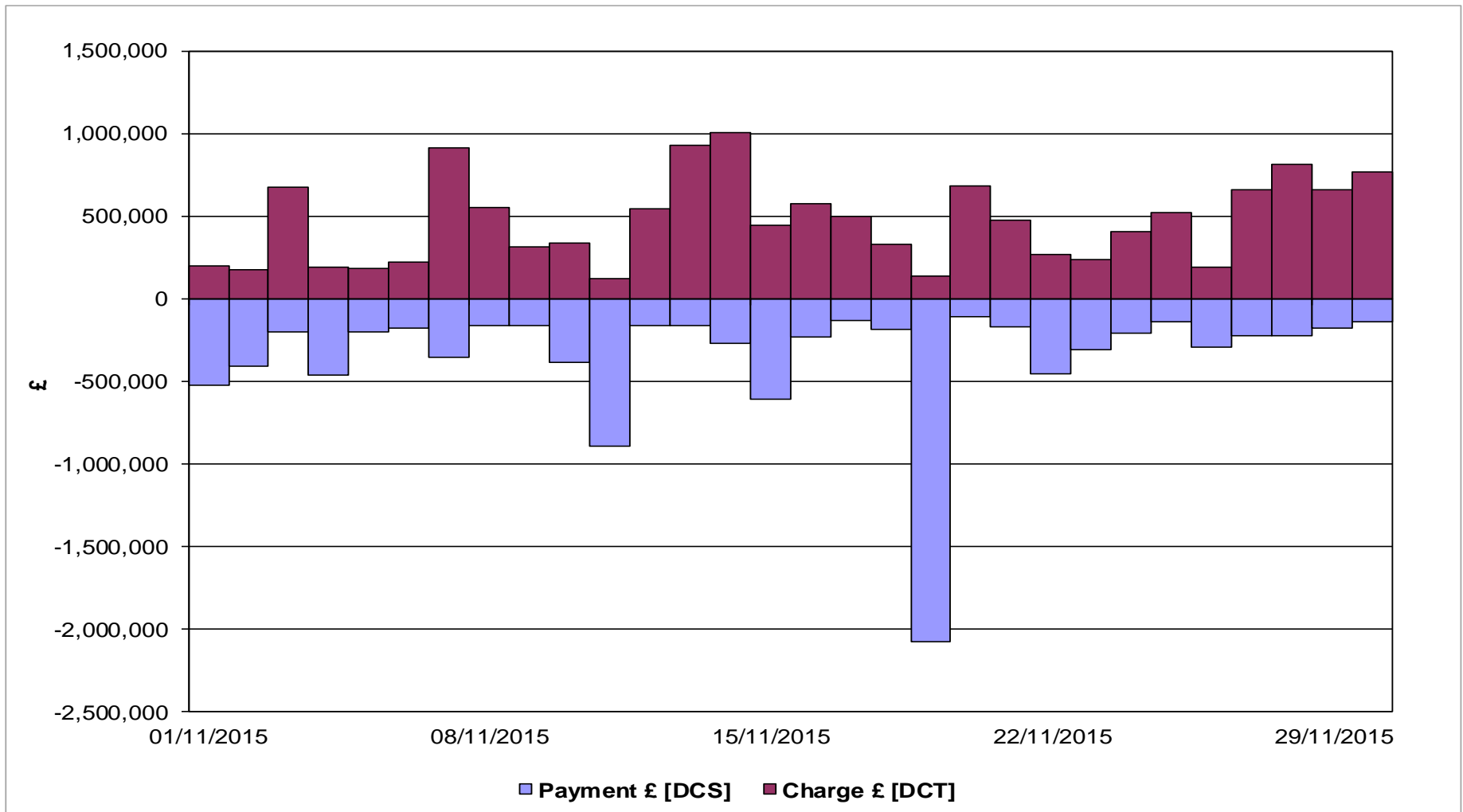
November 2015



# Energy Balancing - Balancing Costs

Imbalance Payments / Charges

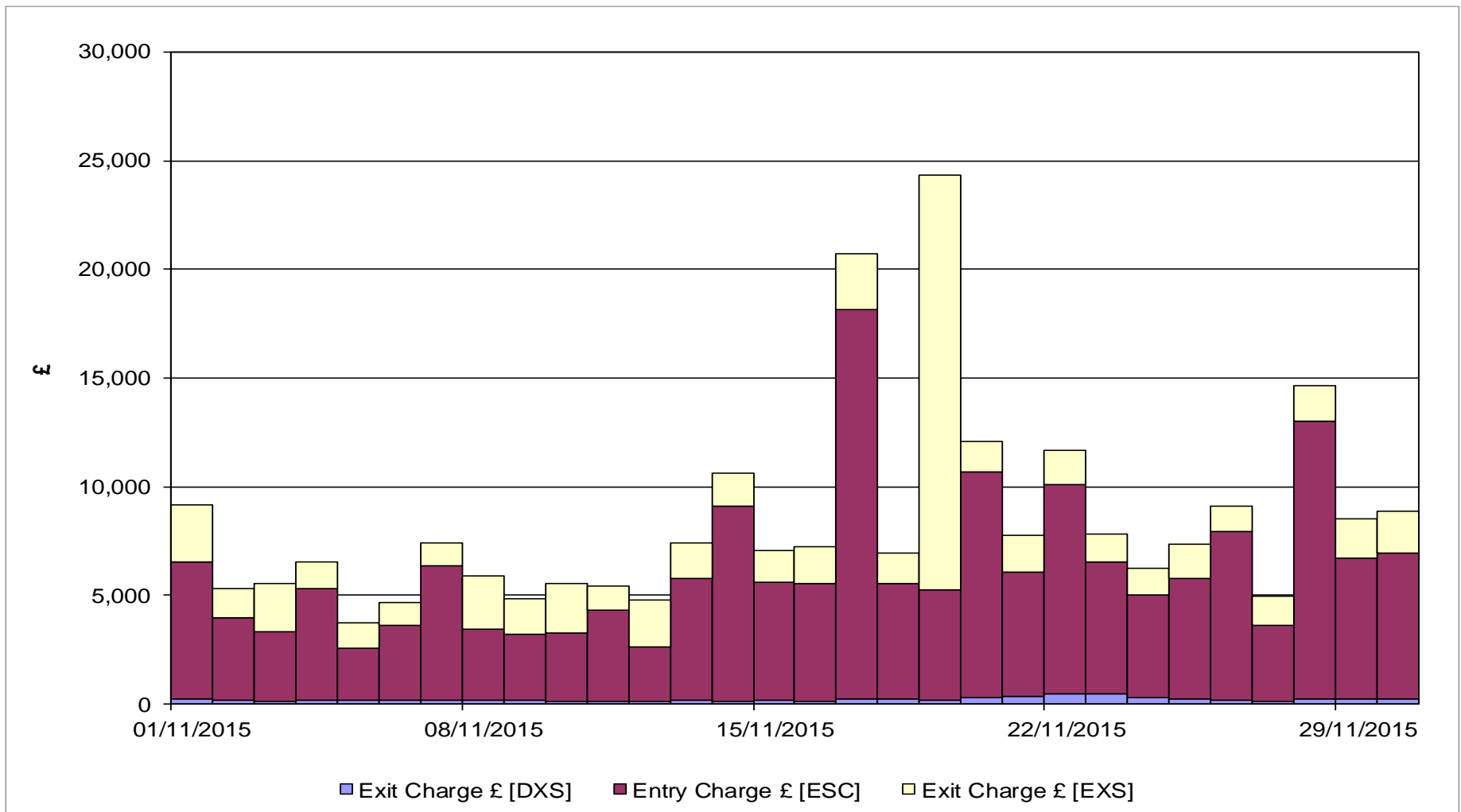
November 2015



# Energy Balancing - Balancing Costs

## Scheduling Charges

November 2015



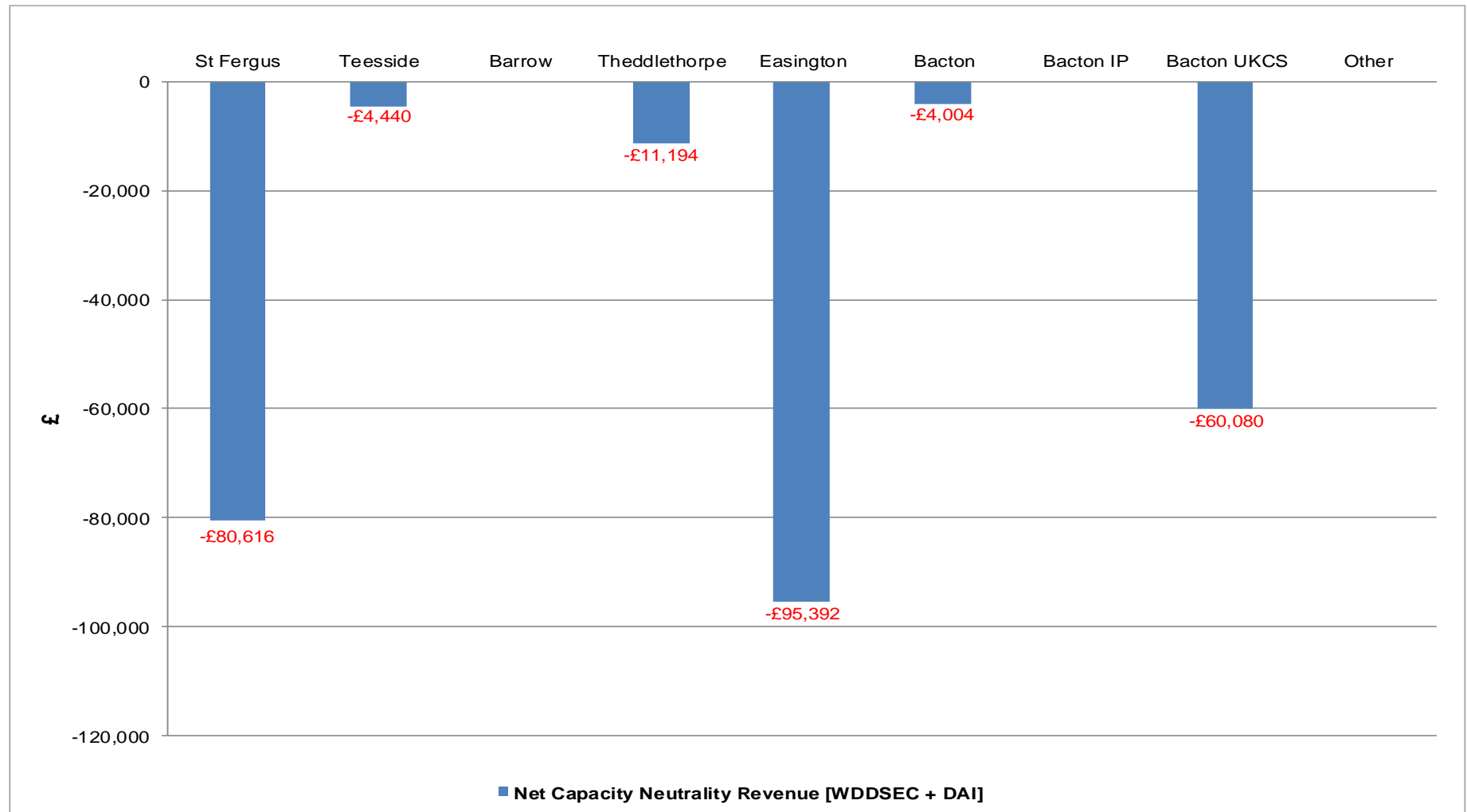
# Capacity Neutrality Net Cost / Revenue

1<sup>st</sup> April 2015 to 31<sup>st</sup> December 2015

	Revenue/Costs
WDDSEC/DAI Entry Capacity Revenue	-£255,727
Total Entry Constraint Management Operational Costs	£0
Entry Capacity Overrun Revenue	-£474,816 (As at Nov 2015, Dec 2015 data not yet available)
Non-Obligated Sales Revenue (Entry only)	-£62,745
Revenue from Locational Sells and PRI Charges	£0
<b>Net Revenue</b>	<b>-£793,288</b>

# Net Capacity Neutrality Revenue

1<sup>st</sup> April 2015 - 31<sup>st</sup> December 2015



# Capacity Neutrality

1<sup>st</sup> April 2015 - 31<sup>st</sup> December 2015

Month	Entry Cap Overrun Revenue	Non-obligated sales revenue (entry)	Month	Locational Sells and PRI charges revenue
Apr-15	-£212,709	£0	Apr-15	£0
May-15	-£74,181	£0	May-15	£0
Jun-15	-£18,968	£0	Jun-15	£0
Jul-15	-£7,196	-£8	Jul-15	£0
Aug-15	-£25,890	£0	Aug-15	£0
Sep-15	-£12,356	£0	Sep-15	£0
Oct-15	-£33,443	-£15,331	Oct-15	£0
Nov-15	-£90,073	-£27,033	Nov-15	£0
Dec-15	-	-£20,381	Dec-15	£0
Jan-16			Jan-16	
Feb-16			Feb-16	
Mar-16			Mar-16	
<b>Total</b>	<b>-£474,816 (FY15-16)</b>	<b>-£62,753 (FY15-16)</b>	<b>Total</b>	<b>£0 (FY15/16)</b>